

Corporate Profile

Company Japan Economic Research Institute Inc.

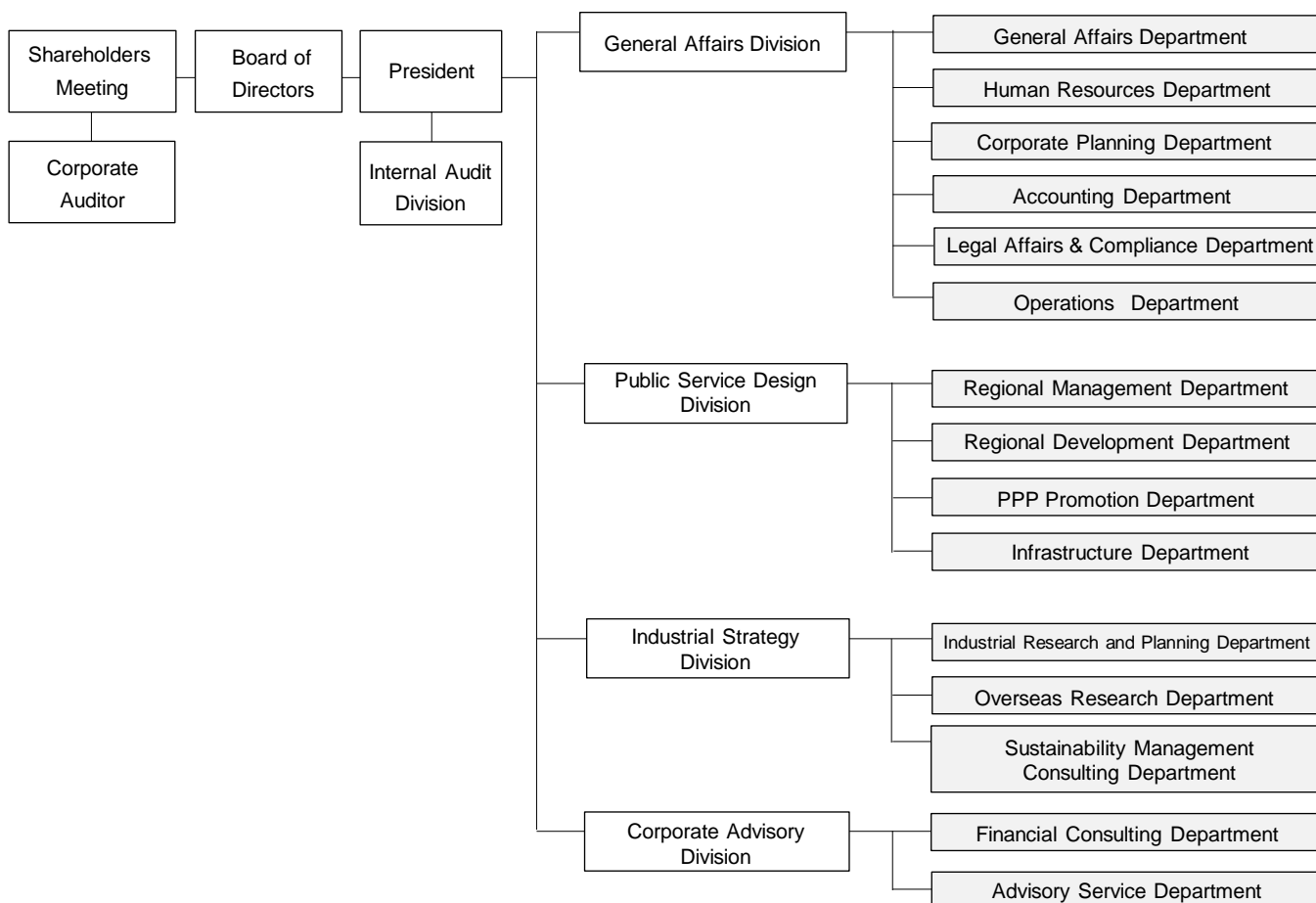
Address & TEL Otemachi Financial City Grand Cube 15F 1-9-2 Otemachi,
Chiyoda-ku, Tokyo, 100-0004
TEL.+81-3-6214-4600
FAX.+81-3-6214-4601
<https://www.jeri.co.jp/>

Paid-in Capital 480 million JPY

Representative Akihito Shioya, President

Stockholders Development Bank of Japan Inc.

Organization



Corporate Profile

Our Consulting Service

Utilizing synergy effects of the following three sectors, we provide high-quality consulting service which meet our clients' needs.

- Public Service Sector — We assist the government and municipalities through our research and consulting in making their policies and plans.
- Business Solution Sector — We assist private firms in achieving sustainable increase in their corporate values by providing reliable research and consulting to them.
- International Sector — We conduct ODA-related research and consulting. We also support overseas activities of private firms through our extensive international network.

Locations

