

# Through our deep analysis with clear perspective, we will always tackle the root of problems.

Research and consulting service by Japan Economic Research Institute Inc., provided for public sector and for private firms, are based on our fair and neutral position and on a long-term perspective.

**Japan Economic Research Institute Inc. is a research and consulting arm of Development Bank of Japan.**

One of the earliest economic think-tanks in postwar Japan and always half a step ahead of the times. Now, as a research and consulting arm of Development Bank of Japan Inc., JERI brings to DBJ Group an earned reputation as the most reliable provider of advisory services to both public- and private-sector clients. Since DBJ's conception as a public entity, the four elements comprising its DNA—long-term perspective, neutrality, public-mindedness and trust—have been a source of institutional pride. Today's DBJ Group recognizes this inheritance as a source of strength.

## JERI's Network

### internal network

- Development Bank of Japan
- The Japan Economic Research Institute

### external network

#### Private enterprise

- Law firm
- Accountancy firm
- Economic organization
- Private enterprise

#### Academic organization

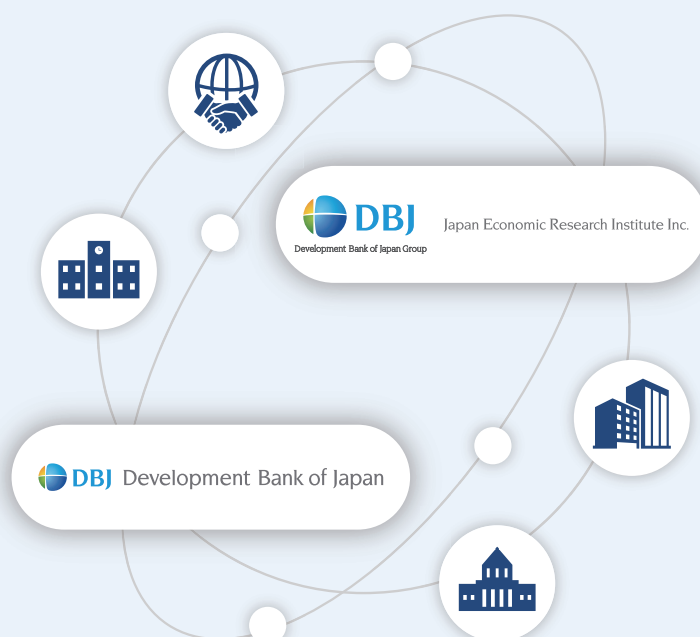
- Colleges and Universities
- Research institute economic organization
- Accomplished researcher

#### Central and local Government

- The Japanese Government
- Local Governments
- Government-Related
- Regional think tanks

#### International organization

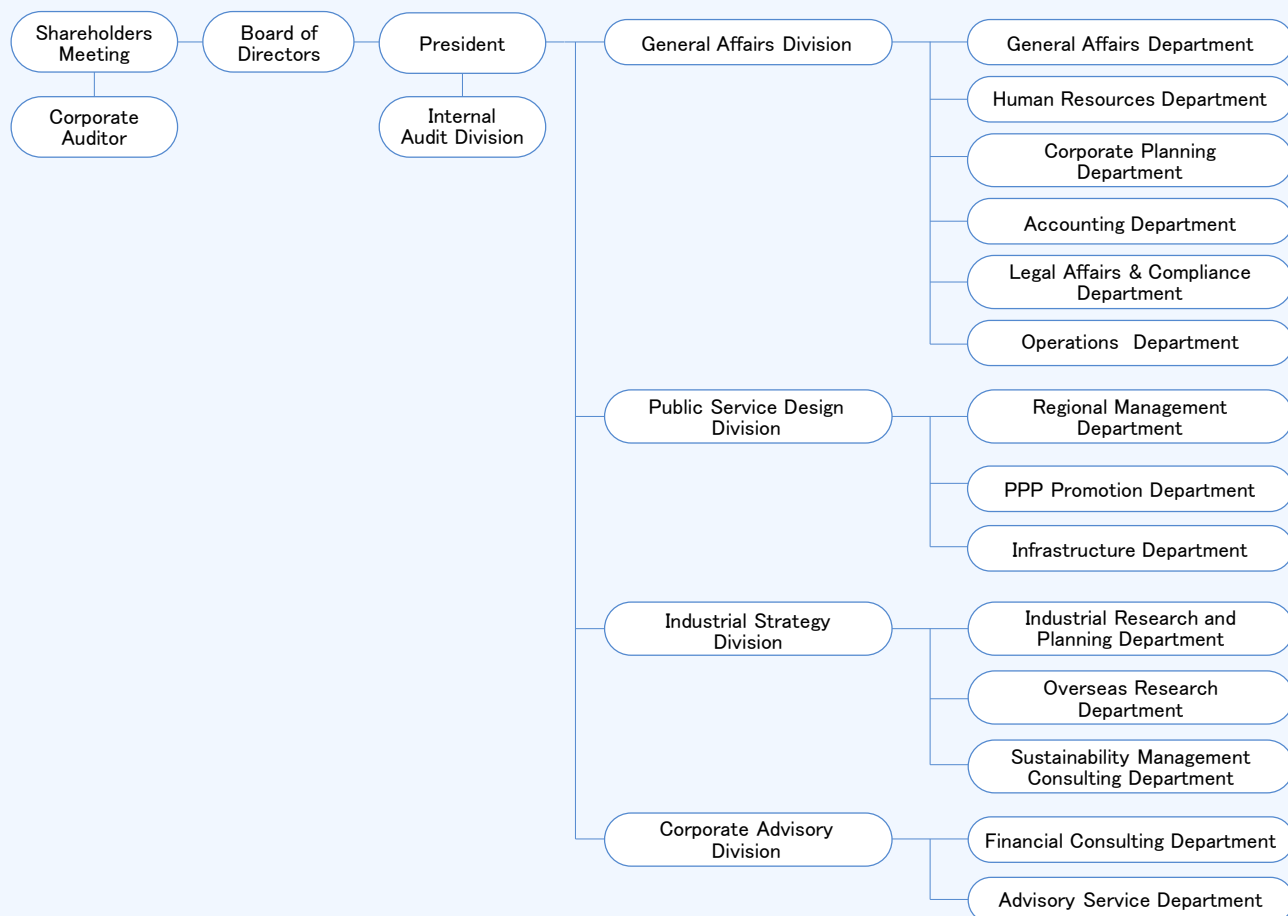
- International organization
- Foreign embassy in Japan
- Diplomatic establishments abroad
- Foreign Government-Related Institution
- Foreign local consultant



# Corporate Profile

Company	Japan Economic Research Institute Inc.
Address & TEL	Otemachi Financial City Grand Cube 15F 1-9-2 Otemachi, Chiyoda-ku, Tokyo, 100-0004 TEL. +81-3-6214-4600 FAX. +81-3-6214-4601
Paid-in Capital	480 million JPY
Representative	Akihito Shioya, President
Stockholders	Development Bank of Japan Inc.

## Organization



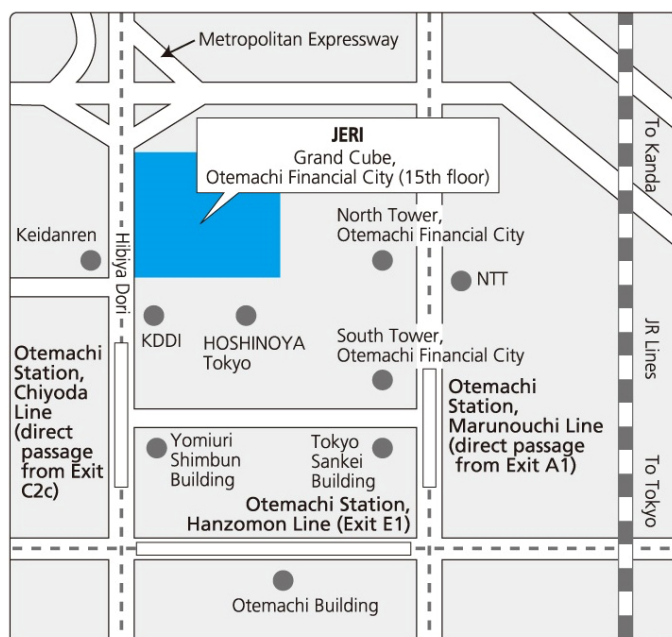
# Corporate Profile

## Research and Consulting

Provide a panoply of research, consulting, advisory and other services in the public, business solution and international sectors.

- Service For Public Sector ——— As a professional outside advisor to public entities, JERI can assist in creating policy propositions based on comprehensive research and analysis of the issues.
- Service For Private Enterprise ——— As a professional outside staff to business entities, JERI can advise and assist in creating 'maximizing corporate value plan', 'new business plan', BCP as well as 'business and project evaluation'.
- Service For International business ——— Japan Economic Research Institute Inc. (JERI) contributes to the economic and human resource development of developing countries through technical assistance (knowledge). Specifically, we transfer to developing and transitional countries the skills required for their economic and financial development.

## Locations



Otemachi Financial City Grand Cube 15F  
1-9-2 Otemachi, Chiyoda-ku, Tokyo,  
100-0004

- Otemachi Station, Chiyoda Line  
(direct passage from Exit C2c)
- Otemachi Station, Marunouchi Line  
(direct passage from Exit A1)
- Otemachi Station, Hanzomon Line  
(Exit E1)